



Drop-off and Pick-up Procedures

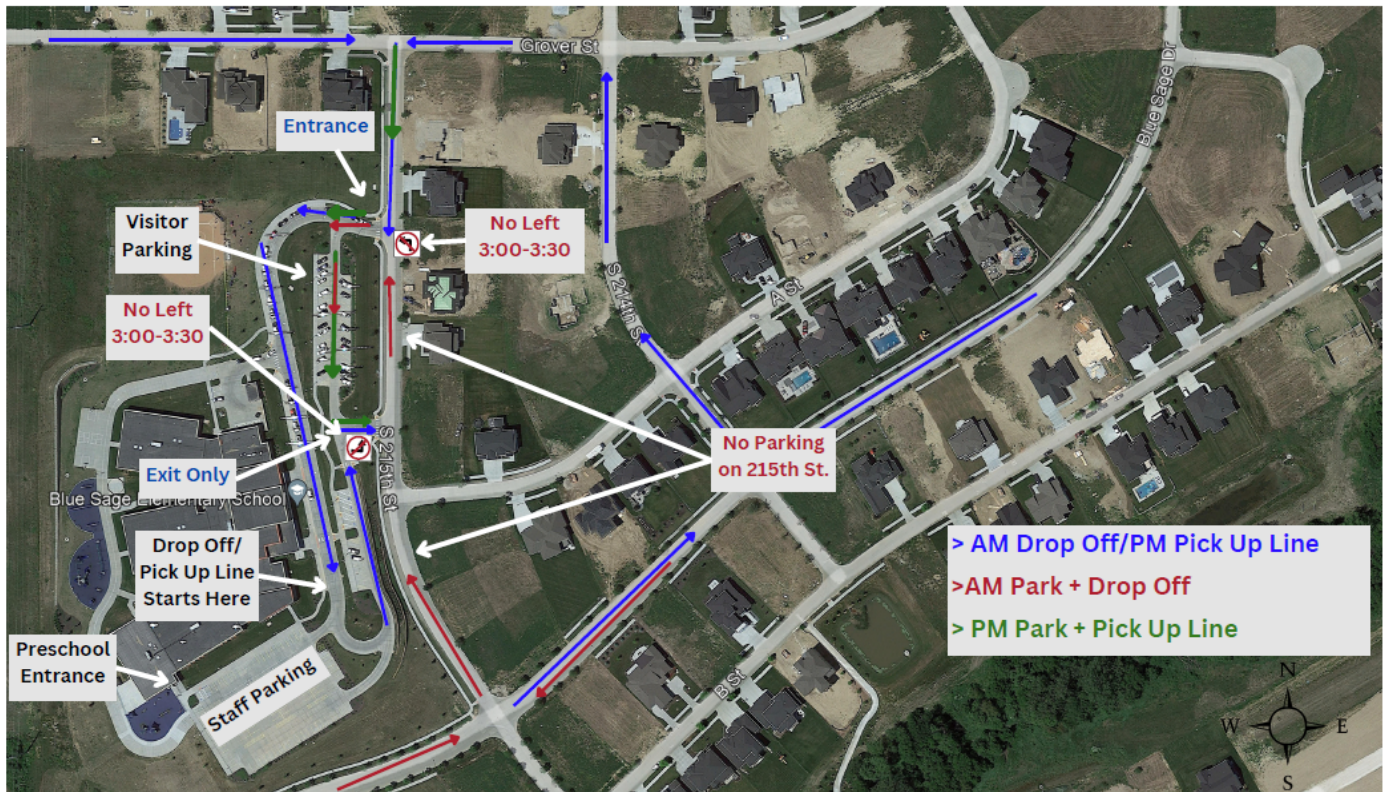
Morning Supervision/Walking Club begins at 7:55 a.m.

Breakfast: 7:35 a.m.

First Bell: 8:10 a.m.

Tardy Bell: 8:15 a.m.

Dismissal: 3:06 p.m.



The safety of our children is a priority. Let's work together to ensure a safe arrival and dismissal for our Blue Sage students. Please review the following drop-off and pick-up procedures for our students and discuss them with your children and anyone who will be dropping off or picking up children at Blue Sage.

PRESCHOOL DROP-OFF & PICK-UP INFORMATION

- Preschool drop-off times: 8:20-8:30 OR 12:20-12:30
- Preschool pick-up times: 11:30 or 3:30
- There is NO LEFT from 3:00-3:30 into our entrance. You will need to turn right to enter. If you have arrived before our K-5 pick-up has started you may proceed in the left-hand lane to access the staff parking lot. If K-5 pick-up has already started, you'll need to remain in the right-hand lane to access the staff parking lot.
- Please do not pull into the school van spots.

ELEMENTARY DROP-OFF INFORMATION

- Sodexo breakfast drop-off time starts at 7:35 and ends at 8:00. Students enter through the lunchroom doors.
- Students not eating school breakfast may arrive starting at 7:55 and will enter the building at the main entrance.

Morning Drop-Off Procedures

- Enter the line at the north entrance of the school from Grover Street. Then proceed in the curbside (right) lane of the school.
- Parents that prefer to park and drop off or walk their students to the front door need to come from the south off of Blue Sage PKWY and turn left to access the visitor parking lot. (Mornings only as there is a NO Left after school sign posted.)
- When dropping off please pull as far forward as possible up to the flagpole.
- Drop off from the right side of the vehicle ONLY. Students should never exit the left side of the vehicle. Please do not get out of your car to help your child out of the vehicle. If your child needs help exiting your vehicle, you must park your vehicle in the visitor parking lot. Do not make your own path and cut across the drive-through lane to get up to the school.
- Have all your children in your car exit at the same stop curbside, stopping only once.
- We need all students to exit vehicles along the entire curbside lane.

After School Pick-up Procedures

- Students are dismissed at 3:06 p.m. Students need to be picked up by 3:20 p.m.
- There is no left turn into the entrance between 3:00 p.m. and 3:30 p.m.
- Families that decide to use the drive through lane must come from the north off of Grover Street and turn right to enter school property. Remain in the curbside lane and pull forward.
- Pull as far forward as possible up to the flagpole.
- Please remain in your vehicle. Do not get out to locate/assist your children or to visit with other adults.
- Have your child enter your vehicle on the passenger side only.
- Once you have your children in your vehicle you may move over to the outside lane (left lane) to exit the school property.
- Staff Parking Lot Protocols: You may use the staff parking lot, but if you park in the staff parking you must come up and pick up your children. Parking in this lot is only available before traffic starts to move. If you need to access this parking lot after the pick-up process has started, you will need to remain in the right-hand lane until you get to the entrance of it.
- EXITING: Please only turn RIGHT when leaving school property to avoid the congested traffic at the entrance.
- WALKERS: We will be crossing students at our exit at the STOP sign to 215th, not at A Street due to the location of the crosswalk. (This will start once the crosswalk has been installed.)

General Safety Reminders:

- Please drive distraction free and refrain from using your cell phones in the drop-off/pick-up lane.
- Do not make your own path and cut across the drive-through lane to get up to the school as this impedes the normal flow of traffic and doesn't model safe crossing procedures. Please utilize the designated crosswalk.
- Make sure your vehicle is not stopped in the crosswalk as this prevents students from being able to cross safely.
- **Be Patient**—The process only takes 15 minutes.
- Please do not park on 215th Street for drop-off. This slows down the process for all other vehicles. Plus, we do not want students crossing 215th Street after getting out of their vehicles as this isn't the safest choice.

With over 600 Pre-K-5 students in the building, we need your cooperation to minimize traffic issues. We expect all drivers to be courteous and to follow the established rules of the road in and around Blue Sage Elementary. Thank you to everyone for playing a key role in helping to ensure our students' safe arrival to and from school.